



LUXURY LIVING. SUPERB SERVICES. COMPASSIONATE CARE.



# WHAT MAKES US DIFFERENT

## SALUS.



Latin for “well-being,” this comprehensive philosophy is infused into everything we do, making sure that programs, classes and activities are designed to inspire and engage.

## SERVICE TREE.



“The customer always comes first” is frequently said, but rarely demonstrated. At AgeWell Solvere, it guides every relationship we have.

## STORY TREE.



Our StoryTree philosophy reminds us to see your life like you do, as a story with many chapters, countless subplots and interesting characters.

# A PASSION FOR PEOPLE

There's no denying it. The passion to inspire others is what drives AgeWell Solvere and our communities. It's an intense passion that energizes us to bring out the best in every partner relationship; community resident, family member, team member, developer, owner and our own team members.

That's what makes AgeWell Solvere unique in its approach to senior housing, be it a new development or a community in need of turnaround or growth. Passion is where it starts.

# WELCOME TO SONATA

**HOMELIKE.**  
**DISTINCTIVE.**  
**COMPASSIONATE.**  
MEET YOUR FAMILY'S  
PARTNER IN ASSISTED  
LIVING AND MEMORY CARE.



Sonata by AgeWell Solvere offers multiple best-in-class senior lifestyle choices that allow our residents to unlock their full potential. Through innovative features and impeccable design — including diverse programming, 24-hour care and some of the best amenities in the area — our residents receive an experience that truly reflects our high standards of care and service.

Everyone who moves to a **Sonata Assisted Living & Memory Care** community has led a unique life and experienced special moments worth remembering. That's why we've redefined the care we provide, focusing on a single purpose of helping residents feel as much like themselves as possible. Truly valuing each resident's legacy and fostering meaningful living is what makes our communities so special.

From the distinct character and charm of our locations to the individual personalities and backgrounds of residents and team members, our communities are a mosaic of experiences, traditions, and moments that make each one truly special. We believe that it's this rich tapestry of stories that creates the vibrant, warm, and welcoming environment that is home. Our family looks forward to welcoming yours home.

# PRICING OVERVIEW

## **\*Private & Companion Monthly Rental Rates**

***Sonata Assisted Living & Memory Care*** offers several affordable month-to-month rental rates coinciding with your private or companion suite floor plan in either a Harmony Assisted Living or Serenades Select Memory Care neighborhood. Monthly rates include a variety of services and amenities including utilities, laundry service, and meals. For a complete list of amenities, please view our enclosed Services & Amenities sheet.

## **Personal Care Pricing: Meeting the Needs of Our Residents**

Care is one of the most important services we provide, and our residents rely on us for assistance and supervision. To best meet our resident's needs we offer different levels of care. These levels are determined by a health evaluation and the 1823 Form.

## **REFER TO THE ENCLOSED RATE SHEET FOR SPECIFIC PRICING.**

## **Short-Term Respite & Day Stays are available.**

Please call for rates.

\*Prices and floor plans may vary based on community location and availability. A one-time, non-refundable Community Fee will apply to each full-time resident. Community Fees fund the maintenance of shared areas within the community, as well as capital improvements.

# SERVICES & AMENITIES

## Unmatched Level of Care, Service, and Hospitality

Sonata surrounds you with a wide range of services meant to surprise and delight, empowering you to live as independently as possible. That's the Sonata way. While most of these amenities and services are offered at all our **Sonata Assisted Living & Memory Care** communities, we encourage you to inquire with the specific South Florida location to obtain specific and current options.

### For your Leisure

- Chef-prepared breakfast, lunch, dinner, and snacks
- Exercise and fitness programs
- Cultural, social and educational programs, outings, and events
- Outdoor courtyards, gardens, and walking paths
- Library and spacious social gathering rooms
- Full-service hair salon
- Movie theater and art studio\*
- Small pets welcome\*

### For your Convenience

- Choice of companion or private floor plan
- Licensed nurses on-site 24-hours a day
- Mobility and transportation assistance
- Weekly housekeeping, laundry service, and standard maintenance
- Medication assistance, management, or administration\*
- Personal care assistance
- Incontinence care
- Emergency response system
- On-site therapy, medical services, and diabetic care
- **Short-term and respite stays available**

*\*Services may vary between locations.*

# PASSION FOR PEOPLE & PROGRAMMING



## Person-Directed Care.

Reassuring people that they're cared for and respected as adult individuals is vital to their sense of belonging, confidence, and happiness. One way we provide reassurance is through personalized care plans as well as consistent daily routines that residents can count on. Created with residents and their families, each individual's care plan and schedule are determined by his or her needs and lifelong preferences, not our staff's convenience.

## Partnership with Families.

Residents' families are our families, too. They count on us to provide support and education, include them in their loved one's care, and welcome their involvement in daily activities. Our inviting homelike environments - complete with dining and gathering spaces, outdoor gardens and pathways, and a library - encourage meaningful visits from family and friends of all ages.

## Programming: A holistic senior living approach

Our community offers a holistic approach to senior living, exemplified by our signature programs. **Salus™** focuses on comprehensive wellness, prioritizing the physical, emotional, and social well-being of older adults. In parallel, **Valeo™** is dedicated to individuals living with dementia, providing specialized care and innovative therapies. Together, these programs ensure a well-rounded, tailored experience for every resident, embodying our commitment to enhancing their quality of life.

# SERENADES MEMORY CARE

## Not All Memory Care Communities Are the Same.

In addition to a hassle-free, vibrant lifestyle fueled by signature programming, our **Serenades** neighborhoods are unique, secure, highly functional, homelike, and comfortable alternatives to the traditional memory care facilities currently operating in South Florida.

## What Makes Serenades Memory Care Different?

Our people are what make the **Serenades** care so different. We believe those with a heartfelt desire to do so provide the best care. We are redefining memory care and assisted living where those with Alzheimer's and related dementias, along with their families, will discover a proven program that is the culmination of best practices and the latest research in Alzheimer's Disease.

## Valeo™ (va-LAY-oh): Creating moments of joy every day

Derived from the Latin word meaning "to thrive," Valeo includes memory-care specific programs created for residents with memory impairments like Alzheimer's, as well as a holistic wellness philosophy. Every Valeo program is personalized for individual residents, taking into account their unique abilities and preferences.



## The wellness philosophy connects with residents and support them in improving their wellbeing through four pillar focus areas:

- Physical: use exercise, healthy and nourishing food, and active pursuits to improve physical wellness
- Social: support existing relationships and foster new ones with both people in the community
- Intellectual: engage the brain with creative programs that activate the mind, helping residents recapture memories and preserve cognition
- Spiritual: connect with one's personal beliefs and honor their traditions

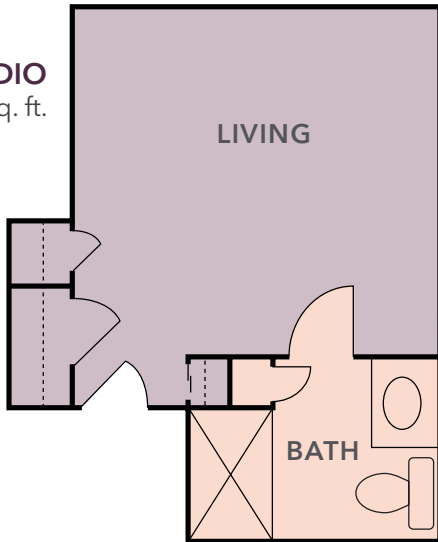
The goal of the Valeo philosophy is to provide daily stimulation and afford every resident personalized opportunities for one-on-one engagement. We help people build relationships and pursue their interests in an empowering environment.



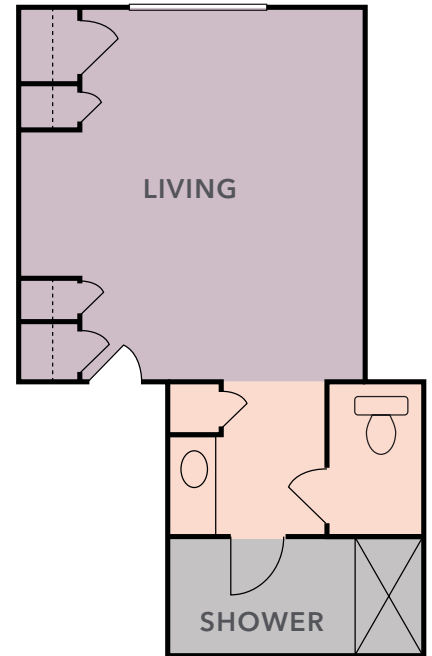
# FLOOR PLANS

## SERENADES SELECT MEMORY CARE

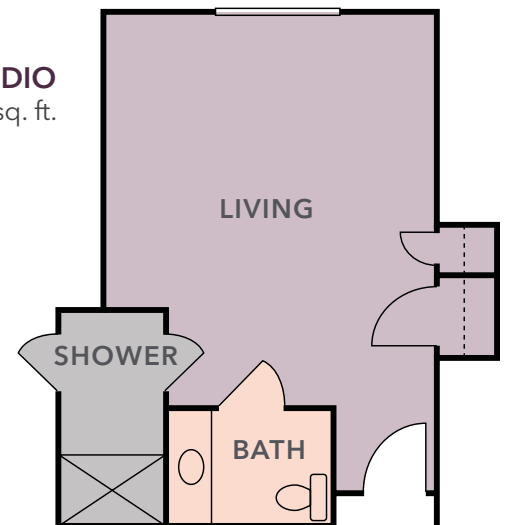
**STUDIO**  
296-375 sq. ft.



**DELUXE STUDIO**  
398-421 sq. ft.



**SHARED BATH STUDIO**  
574 sq. ft.



### Boca Raton Suite features:

- Private bathroom in each unit with grab bars, walk-in showers, and non-slip surfaces
- Telephone hookup
- Wi-fi and basic cable included
- Window coverings
- Individually controlled AC/heating
- Emergency call system
- Integrated smoke detectors
- Enhanced window security



# HARMONY ASSISTED LIVING



## Nurturing Environment Just Like Home.

Sonata's Harmony Assisted Living neighborhoods offer places of friendship, vitality, and support in a homelike and comfortable setting. It's senior living with the supportive care services you need to help you enjoy your days as you wish, safely and with as much independence as possible for as long as possible.

Harmony Assisted Living creates a healthy, fulfilling quality of life for our residents and peace of mind for their families through truly worry-free living that is customized specifically to their needs, interests, and preferences. Our trained wellness and care staff, **including 24-hour on-site licensed nursing**, is dedicated to nurturing and enhancing overall physical, emotional, and spiritual wellness in ways that are meaningful and fulfilling to each individual in our care. At Sonata, you will have a personalized care plan, access to a host of convenient services, amenities, delicious chef-prepared meals each day, scheduled transportation, entertainment, and so much more!



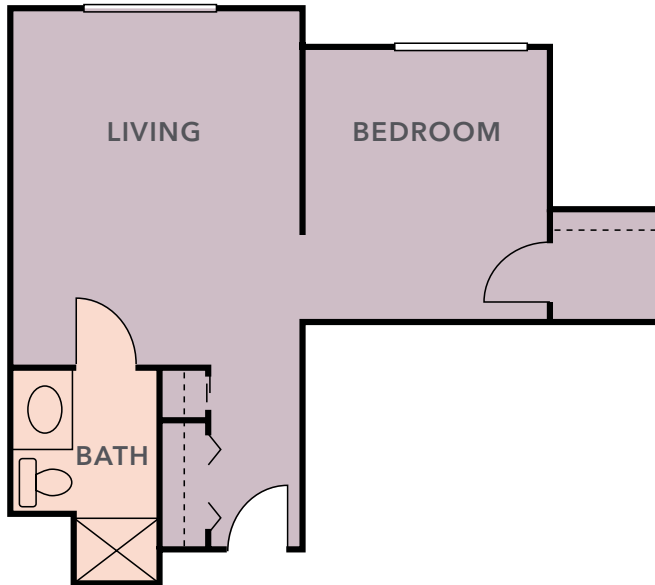
## Salus™ (SAL-us): Our Signature Wellness Philosophy

Derived from the Latin word meaning "well-being," Salus is our trademark wellness philosophy, a holistic approach that focuses on each resident's potential to achieve his or her personal goals through engagement and connection.

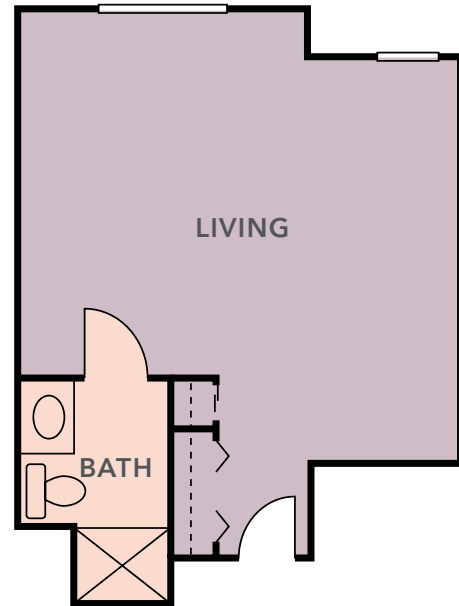
In addition to the services and amenities of the community, the Salus philosophy is integrated throughout our community. Residents will find no shortage of programs, events and ways to connect with others to sustain or improve their health and wellbeing. Residents, their families and the team alike are encouraged to use their unique talents and professional skills through our signature Salus programs.

# FLOOR PLANS

## HARMONY ASSISTED LIVING



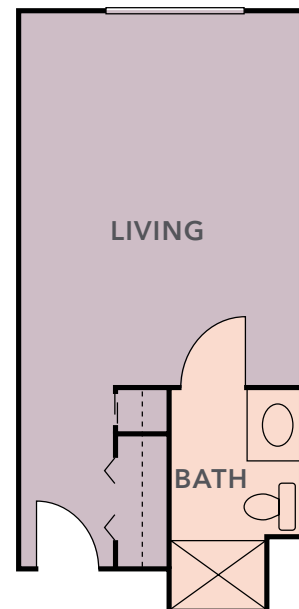
**1 BEDROOM SUITE**  
523-530 sq. ft.



**DELUXE STUDIO**  
467-491 sq. ft.

### Boca Raton Suite Features:

- Private bathroom in each unit with grab bars, walk-in showers, and non-slip surfaces
- Kitchenette with microwave and refrigerator
- Telephone hookup
- Wi-fi and basic cable included
- Window coverings
- Individually controlled AC/heating
- Emergency call system
- Integrated smoke detectors
- Enhanced window security



**STUDIO**  
304-361 sq. ft.



**(561) 4977-8808**

**SONATABOCARATON.COM**

9591 Yamato Road | Boca Raton, FL 33434

Assisted Living License #9911

